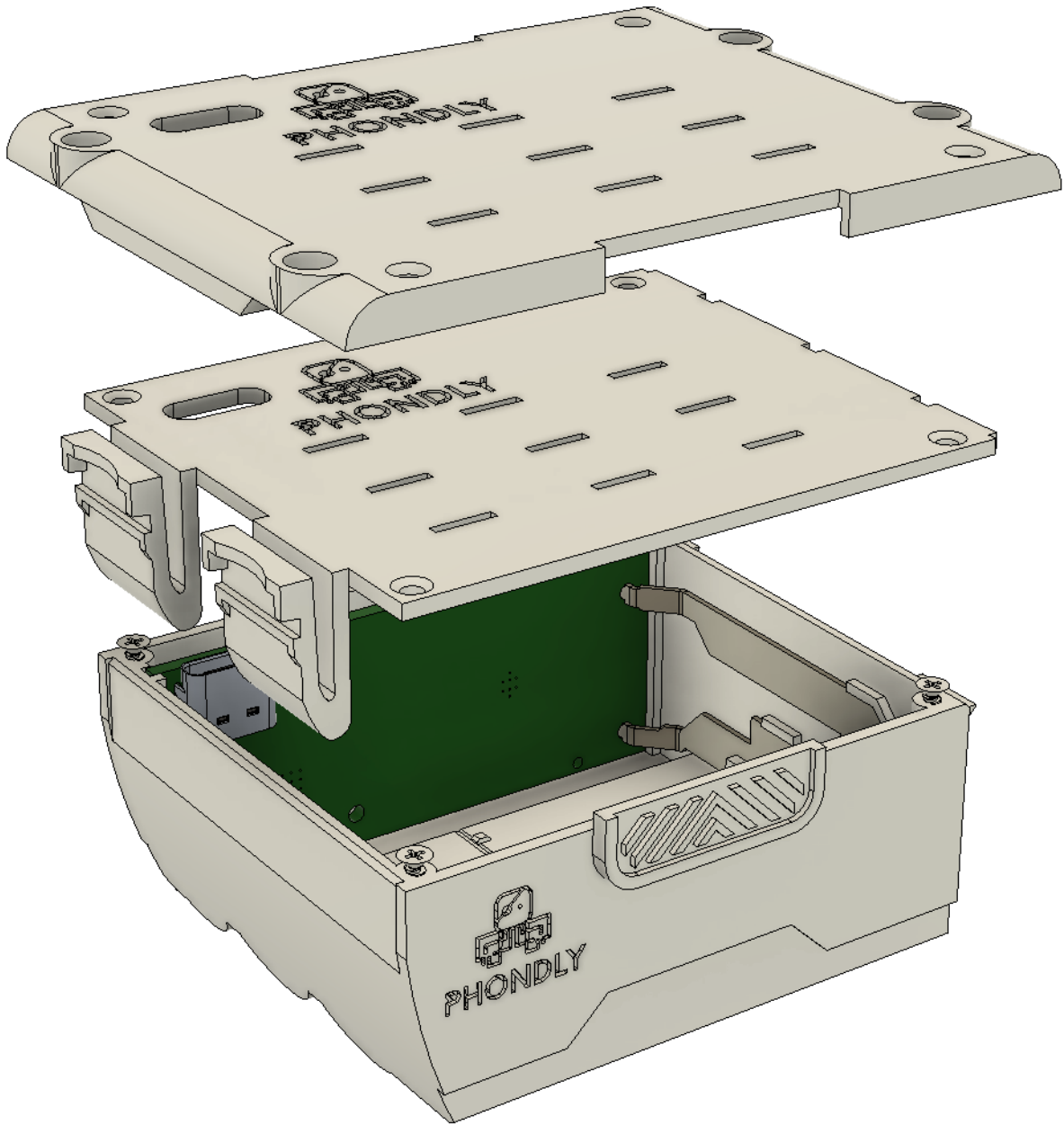


EnBo PU Battery Pack User Manual



Introduction

The EnBo PU Battery Pack is an alternative battery pack for LEGO Powered Up HUBs. When used correctly, it provides longer runtime and easier replacement compared to the original LEGO battery holder.

There are two versions of the EnBo PU Battery Pack:

- **Snap-on version** – Attaches to the HUB with strong locking tabs.
- **Screw-on version** – Uses screws to secure the battery cover.

Please follow the instructions that correspond to the version you have purchased.

Initial Charging Instructions

The purchased batteries are shipped in a safety discharge state. Before first use, they must be fully charged. The charging process is complete when the small green LED, visible through the Phondly logo eye, turns off.

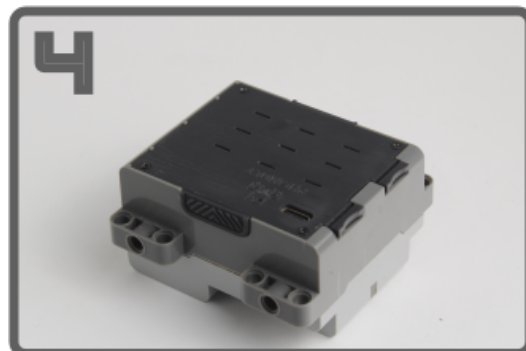
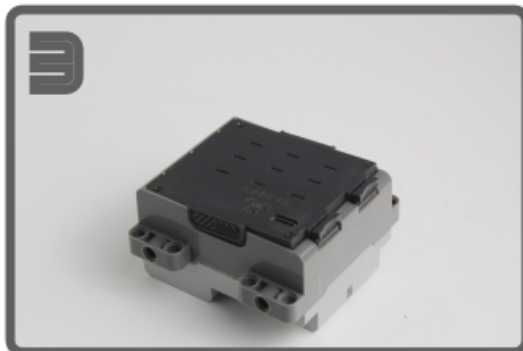


Installing the Battery Pack

Snap-on Version

Prepare the HUB by removing the existing LEGO battery holder. Align the battery pack with the HUB and press it firmly into place until the locking tabs click into position.

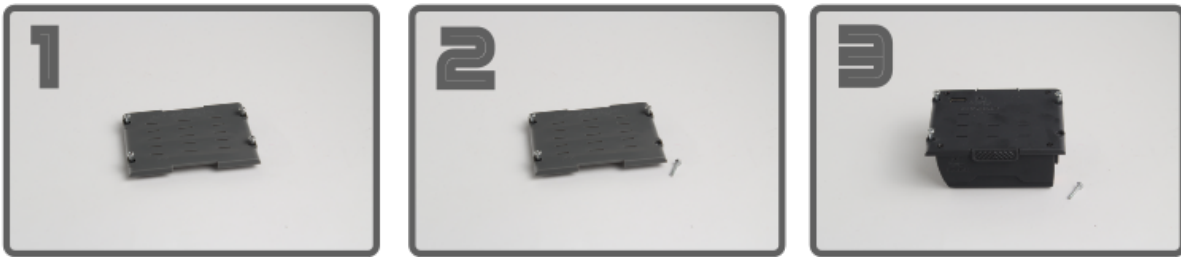
(See image: Inserting the battery into the HUB.)



Screw-on Version

Prepare the HUB by removing the existing LEGO battery holder. Transfer the screws from the original LEGO HUB cover to the EnBo battery cover to ensure proper installation.

(See image: Transferring the LEGO HUB screws to the EnBo cover.)



Insert the battery pack into the HUB and secure it using the transferred screws.

(See image: Inserting the battery into the HUB.)



Removing the Battery Pack

Snap-on Version

Press the locking tabs inward as shown in the image to release the battery pack. Gently pull the battery upwards while keeping the tabs pressed to avoid damage.

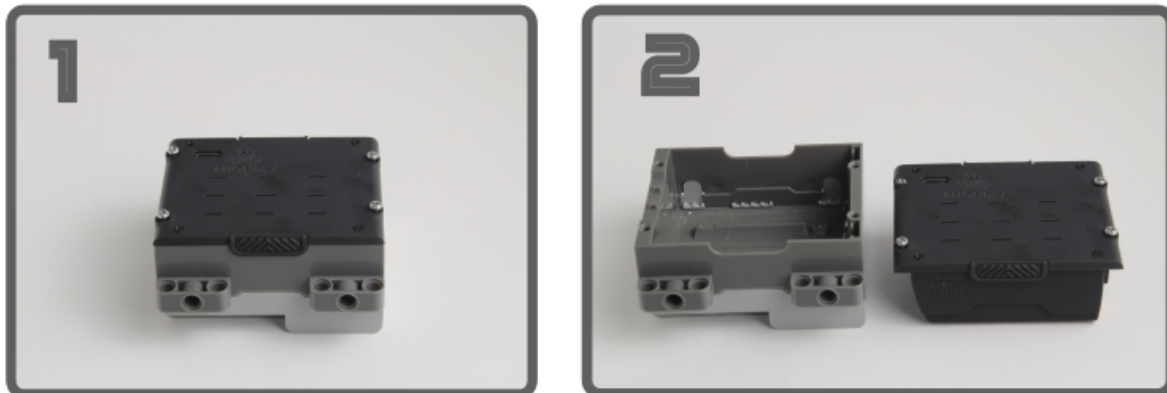
The plastic used in this version is more rigid compared to the original LEGO snap-on tabs. For the easiest removal method, follow the instructions shown in the linked video.

<https://youtu.be/3PGO5PIQ3FQ>

Screw-on Version

Use a screwdriver to remove the screws securing the EnBo cover. Lift the battery out carefully.

(See image: Removing the battery from the HUB.)



Additional Information

Always check that the battery is securely fastened before use. For the snap-on version, remove the battery correctly to prevent damage to the locking tabs. Do not overtighten the screws on the screw-on version to avoid damaging the components.

These instructions, along with the included images, will help ensure the correct installation and removal process.